

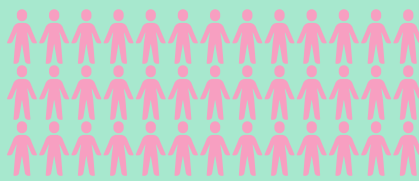
RSHE IN LBR

An overview of feedback and actions towards our next draft Syllabus.

(May 2021)

513 RESPONSES ONLINE

hundreds of people have shared their feedback across the Borough of Redbridge.

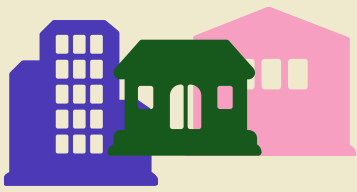


MULTIPLE WORKING PARTY GROUPS HAVE SHARED FEEDBACK.

PARENTS SHARED FEEDBACK AT THE FEW VIRTUAL CONSULTATIONS THAT TOOK PLACE PRIOR TO CANCELLATION.

KEY FINDINGS AND AREAS FOR DISCUSSION

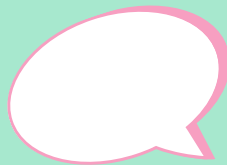
The impact report established 3 key areas.



3

- Syllabus content
- Age appropriateness
- Resources

YOU SAID:
"SEX EDUCATION OUTCOMES TO BE CLEARLY IDENTIFIABLE WITHIN THE SYLLABUS"



WE DID

**"WE" REFERENCES THE LOCAL AUTHORITY.

All Non Statutory Sex Education outcomes at Primary and Statutory, but withdrawable, Sex Education outcomes at Secondary now highlighted in the syllabus.

YOU SAID:
"MENTAL HEALTH AND WELLBEING TO APPEAR MORE REGULARLY"



WE DID

Social Emotional and Mental Health related outcomes have been reviewed and included more frequently meaning that outcomes are also spread across more year groups. Particularly in Primary Education.

YOU SAID:
"WORDING OF BODY AUTONOMY TO BE AGE APPROPRIATE"

WE DID

Wording reviewed to include clear teaching of the concept of staying safe and that children and young people's body belongs to them alongside the concept of privacy and how they can keep themselves safe and how to respect personal space.

Find out more and view draft 3 of the Syllabus and updated Model Policy draft which incorporates feedback and changes at